

Torrent™ ! GSM Based – SMS Application, our Windows based, Client/Server enabled GSM based - messaging solution, provides the industry's highest level of capacity, reliability, scalability and flexibility. In addition to lightning-fast Pushing – n - Pulling messages, maintaining message logs schedule, Nexus messaging solutions offer options for creating a schedule to automatically send SMS on a specific day at a specific time. The schedules can be set to a daily frequency, weekly frequency, monthly frequency or a one-time only schedule, plus outstanding capabilities for migration to future technologies that build upon your initial investment.

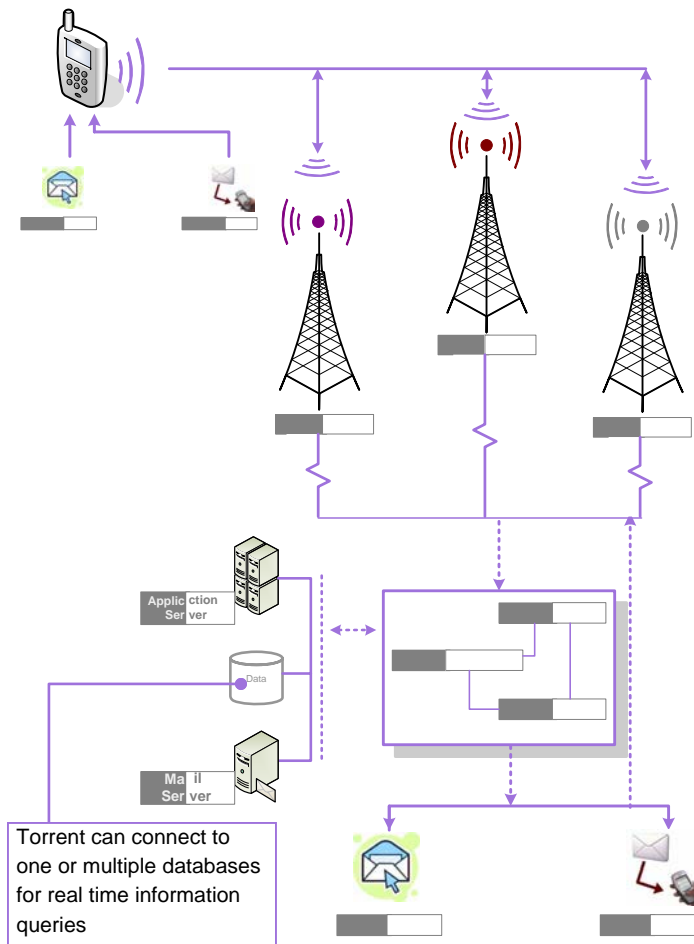
Torrent™ is a platform, which harnesses the power of SMS into an architecture that allows you to rapidly deploy text messaging capability to your existing systems, websites, applications, hardware equipment and electronic devices. It represents the strongest corporate end-to-end Text Messaging solution in the market today. **Torrent** enables organizations to provide two-way messaging facilities to their personnel and corporate information systems using existing messaging infrastructure and line of business applications. In short, the platform provides a fully scalable two-way end-to-end wireless solution for organizations of any size.

One major telecom technology that has taken the world by surprise is the SMS [Short Messaging Service] technology. This technology has become one of the most popular mobile technologies today. The quantum of SMS sent daily around the world is a witness to its popularity. The SMS technology is slowly gaining popularity over e-mails which have been the norm as far as corporate communication is concerned. Today there are various means by which a person or a corporate can send SMS. A person can pick up his mobile phone, type the text message and send the message to various people. A person can use an instant messenger that provides functionality to send SMS from the computer. Alternatively, if the quantum of SMS is very high, the person can register with a bulk SMS provider and use the web interface or a desktop application to send the bulk SMS.

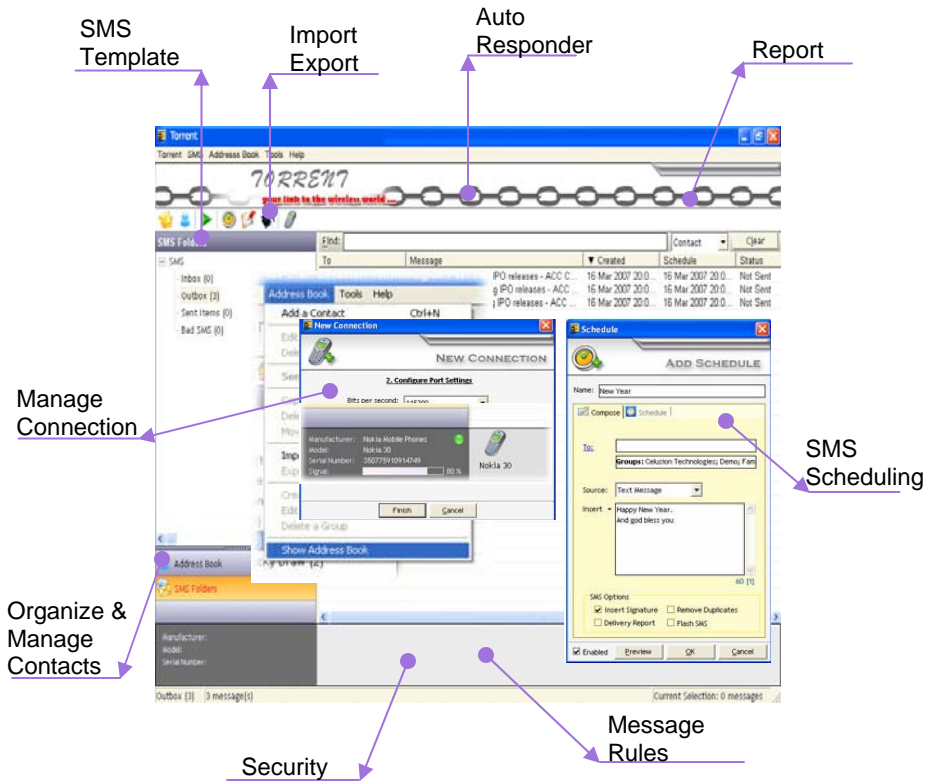
Torrent™ Enterprise Edition is a Microsoft Windows desktop application that simulates in your computer, the power of a mobile phone by collating information from your legacy systems and sending customized SMS using a GSM Router to a target audience. Torrent saves time, cost and human resources and adds value to ANY organization operating on ANY business model.

Application Features

- Manage and Organize Contacts, Groups
- Import Contacts from Microsoft Excel, Microsoft Outlook, Outlook Express or any Contact Management System.
- Auto detect GSM Router / Phone attached to the system, guides through connection settings for each GSM Router and use default connection to send and receive SMS.
- Capable of Sending SMS to any GSM / CDMA phone locally / internationally to one or more Contacts or groups defined.
- Request delivery report for Instant SMS.
- Remove duplicate messages sent to the same contact if the contact is repeated in more than one group.
- Personalize Instant SMS by inserting the contact name & Insert signature at the end of each message, supporting special characters.
- Automatic splitting of messages if message size exceeds 160 characters



- Collate message from Microsoft Excel, Microsoft Access and Microsoft SQL Server
- Create a schedule to automatically send SMS on a specific day at a specific time. The schedules can be set to a daily frequency, weekly frequency, monthly frequency or a one-time only schedule
- Customize SMS through simple wizards that take you through a step-by-step process.
- View onscreen status of connection to the GSM Router / Phone, in terms of SMS Transmission & network range in percentage to troubleshoot SMS transmission and reception
- Inbox, Outbox, Sent items, Undelivered and Bad SMS categories define for incoming, outgoing, Sent, undeliverable messages. Additionally can create, edit and delete folders to organize SMS.
- No limit to message size - no creation of new database as the number of your message log increases



Benefits

- Agile Open Architecture Design to provide the greatest degree of growth in functionality and capacity, Easily incorporates new features and technologies as they are developed.
- Standards based platforms with Off-the-Shelf Hardware for easy maintenance - which controls the cost.
- Archiving to external devices or network based systems – whichever is preferable
- Support growth, GSM Based – SMS Application are scalable in increment of 2, 4,.... Routers.
- Redundancy of key components for mission critical messaging, Continuous 100% Message Push – n - Pull, 24 hours a day, 7 days a week, 365 days a year.
- Different security levels for providing data to specified users with granted rights
- Multi-tasking, multi-threaded application permits all functions, such as playback, archiving, searching, and even full database backup to run concurrently with no interruption to messaging.
- Multi-level security for different users and groups eliminates unauthorized access to Message logs
- GUI interface design is so intuitive and graphic-oriented that it makes administration and training very simple
- Comprehensive Message Reporting, includes standard reports or easy to design customized reports to fit your specific requirements
- Fast processing of very large data sets - hundreds and thousands of message records – provides search results in seconds
- Database backup executed during full system operation - continues message broadcasting. No system shutdown required
- Offer true enterprise-wide utilization by use of workstations on LAN/WAN and Client/Server design
- Sophisticated logic to buffer, archive and protect your message logs - you decide which message or groups of message are automatically archived for how long and on which media - local or via LAN/WAN.